

**Notice of Expansion of Applicable Scope and Change of Modification Symbols
for Coupling Keyway Additional Modification Service**

Dear Valued Customer,

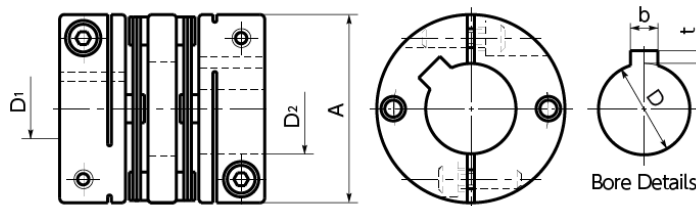
We hope you are doing well and appreciate your continued support of NBK.
For the coupling keyway additional modification service (shaft bore diameter $\Phi 10$), we will expand the scope of applicability and change the modification symbols.
Your understanding and continued support of our products are greatly appreciated.

Applicable Service:

- Coupling Keyway Additional Modification Service
Applicable shaft bore diameter: 10 mm

Details of Changes:

	Before	After	
Keyway Width (b)	3 mm (New JIS)	3 mm (New JIS)	4 mm (New JIS)
Modification Symbol	KT	KT3	KT4



Note 1: There are no changes to the modification symbols for keyway additional modifications with shaft bore diameters other than 10 mm.

Note 2: If an order is placed using the previous modification symbol (-KT), we will confirm the keyway width (3 mm or 4 mm) for each order. We kindly ask for your cooperation in using the new modification symbols (KT3 / KT4).

Example of modification symbol: XHW-25C-10-KT4-12-KT

Effective Date:

Orders received on or after Tuesday, April 28, 2026

Please note that returns or exchanges related to this specification change will not be accepted.

If you have any questions, please contact our sales office in charge of your area.

Thank you for your understanding and cooperation.

Global, including Taiwan and Korea

NBK (Nabeya Bi-tech Kaisha)

1, Toko-Taichi, Seki City, Gifu, 501-3939, Japan

Phone: +81(575)-23-1162

North America

NBK America LLC

3500 Scotts Lane, Unit OFC01, Philadelphia, PA 19129, USA

Phone: +1 (484) 685-7500

Asia, Oceania

NBK ASIA MANAGEMENT PTE. LTD.

80 Robinson Road #10-01A Singapore 068898

Phone : +81(575)-23-7187