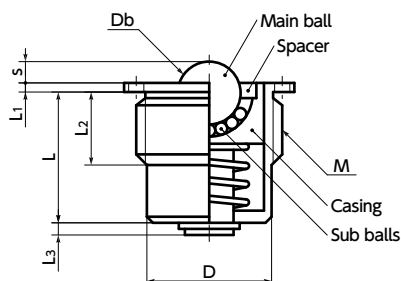
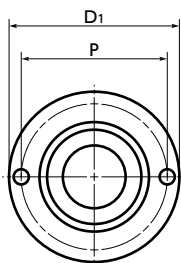




BRPMS-S Ball Rollers with Spring Plunger Function

SUS Stainless steel



● Application

Conveyance / Fixing and locating work / Torque limiting / Indexing

● Material/Finish



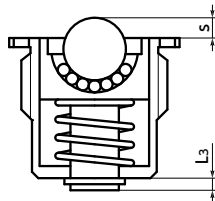
	BRPMS-S
Main Body	SUS304
Main Ball	SUS440C (Hardness: 55HRC or Higher)
Sub Ball	SUS440C (Hardness: 55HRC or Higher)
Spacer	SUS304
Casing	SUS304
Spring	SUS631J1

- Ball roller with plunger function. Flange type.
- Mounting height is easily determined.
- Use a dedicated wrench **BRW** for mounting and removing.
- The internal springs receive loads evenly even when the load is unbalanced.
- These can also be used as a general spring plunger with ball for fixing and locating workpieces. The smooth rotation of the ball reduces friction between the main ball and receiving side.

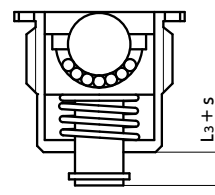


Precautions for Use

- These are for upward applications only. If used for downward and sideward applications, the product may be damaged or the ball may malfunction.
- The bottom section moves the stroke distance of the main ball. Take care with the depth of the attachment hole.



Initial condition



Main ball
At max. stroke

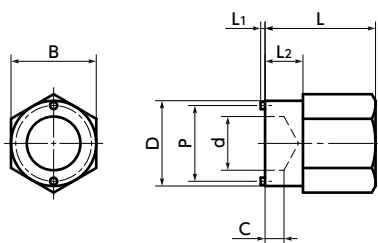
Unit : mm

Part Number	M (Fine) Nominal of Thread	Pitch	L	s	L1	L2	L3	D1	D	Db	P	Applicable Wrench	Load (N) Min./Max.	Mass (g)
BRPMS-16-S	M16	1.5	14	1.5	1.5	9	1.5	19	13.5	5.56	15.4	BRW-10	23 / 30	18
BRPMS-20-S	M20	1.5	17	2.5	1.5	10	2	24	16.5	8.73	18.5	BRW-12	24 / 38	30
BRPMS-24-S	M24	1.5	21.5	3.5	1.5	12	2	28	20.5	10.32	24	BRW-16	24 / 55	54

● Dedicated Wrench

Unit : mm

Part Number	L	L1	L2	B	C	D	d	P	Mass (g)
BRW-10	25	1.4	8	19	3	18.5	10	15.4	55
BRW-12	30	1.4	10	24	4	22	12	18.5	102
BRW-16	35	1.4	12	27	6	27	17	24	153
BRW-20	40	1.4	14	30	7	33	20	29.6	220



● Part number specification

BRPMS-20-S

Product
Code

M

Stainless Steel
Main Ball

1 Individual Sales → P.xxxx

Cleanroom Wash & Packaging → P.xxxx

Screw Length Adjustment → P.xxxx

Vibration Resistant → P.xxxx

1 piece in 1 pack

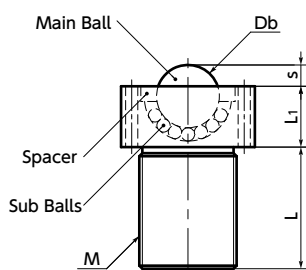
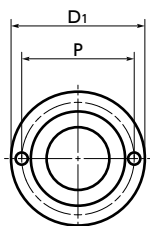
Please feel free to contact us

Not Available

Not Available

BRUCS Ball Rollers - Cap Screw Type

SUS Stainless steel



- These are cap screw type ball rollers with stainless steel bodies for upward applications.
- Install and remove by using **BRW** Specialty Wrench.
- Because a wrench spacer is not required, they can be attached in proximity.
- Application

FPD production equipment, semiconductor devices, food production lines, and packaging lines

Material/Finish



	BRUCS-S	BRUCS-N
Main Body	SUS304	SUS304
Main Ball	SUS440C (Hardness 55HRC or Higher)	Polyacetal/White
Sub Ball	SUS440C (Hardness 55HRC or Higher)	SUS440C (Hardness 55HRC or Higher)
Spacer	SUS304	SUS304



Precautions for Use

These ball rollers are for upward applications only. If it is used for downward and sideward applications, the product may be damaged or the ball may malfunction.

BRUCS-S BRUCS-N

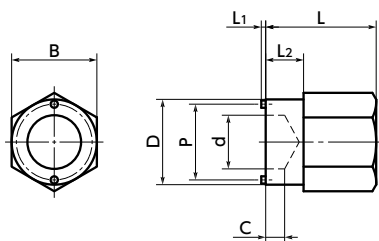
Unit : mm

BRUCS-S Main Ball: Stainless Steel		BRUCS-N Main Ball: Polyacetal		Common Dimensions									
Part Number	Withstand Load (N)	Part Number	Withstand Load (N)	M (Coarse) Nominal of Thread	Pitch	L	L ₁	s	D ₁	Db	P	Applicable Wrench	Mass (g)
BRUCS-10-S	55	BRUCS-10-N	34	M10	1.5	12	10	2.5	18.5	8.73	15.4	BRW-10	26
BRUCS-12-S	62	BRUCS-12-N	55	M12	1.75	15	11	3.5	22	10.32	18.5	BRW-12	42
BRUCS-16-S	343	BRUCS-16-N	69	M16	2	20	15	5.3	27	15.88	24	BRW-16	92
BRUCS-20-S	412	BRUCS-20-N	82	M20	2.5	25	18	6.3	33	19.05	29.6	BRW-20	170

Dedicated wrench

Unit : mm

Part Number	L	L1	L2	B	C	D	d	P	Mass (g)
BRW-10	25	1.4	8	19	3	18.5	10	15.4	55
BRW-12	30	1.4	10	24	4	22	12	18.5	102
BRW-16	35	1.4	12	27	6	27	17	24	153
BRW-20	40	1.4	14	30	7	33	20	29.6	220



Part number specification

BRUCS-12-N

Product Code

M

Main Ball : "S" or "N"

1 Individual Sales → P.xxxx

1 piece in 1 pack

Cleanroom Wash & Packaging → P.xxxx

Please feel free to contact us

Screw Length Adjustment → P.xxxx

Not Available

Vibration Resistant → P.xxxx

Not Available