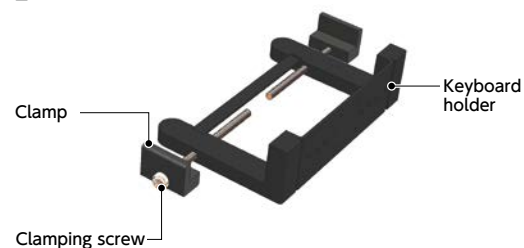


Structure

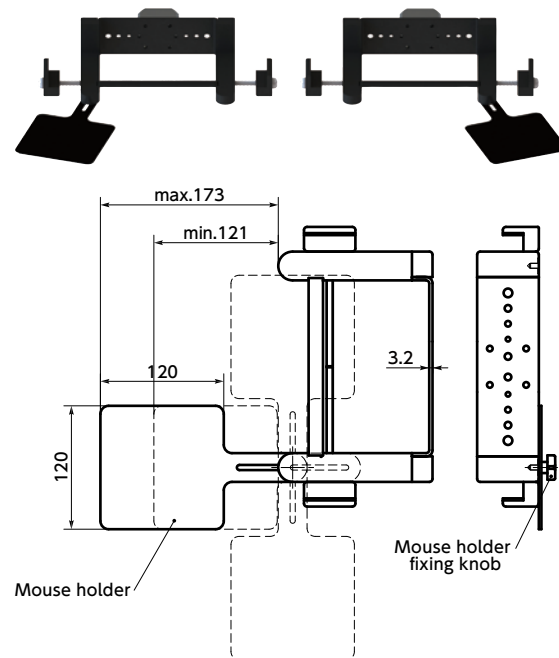


Material/Finish

	DKB	DKB-AA / DKB-PB
Keyboard Holder	ADC12 Electrostatic Coating	
Clamp	ADC12 Electrostatic Coating	
Clamping Screw	SWRCH Trivalent Chromate Treatment	
Bracket	—	A6063 Anodized

Option

- A mouse holder **DKMP** is available as an option.
- This may be mounted on either side.



Part Number	Mass (g)
DKMP	288

Material / Finish

	DKMP
Mouse Holder	SPCC Electrostatic Coating
Mouse Holder Fixing Knob	Nylon 6



- The keyboard can be completely fixed to the mounting surface.
- By tightening the clamping screw, the keyboard is securely fixed and prevented from falling.
- B5 size laptops and 500 mm wide keyboards can be equipped.
- Three types of Mounting System for Display® are available for different types of mounting surfaces.



For aluminum frame /

For wall panel and sheet metal—**DKB**

For aluminum frame end surface mounting—**DKB-AA**

For Round Pipe—**DKB-PB**

- Clamp screws of two sizes (Phillips cross recessed pan head machine screws) are supplied.
M6 × 40: Used when the keyboard width is 256 mm to 280 mm.
M6 × 140: Used when the keyboard width is 280 mm to 500 mm.

Application

Machine tool / Medical equipment / FPD production device / Semiconductor manufacturing device / Packing machine / Food machinery

Part number specification

DKB-500-AA-40 Keyboard Mounting Systems

Product Code

DKMP Mouse Holder



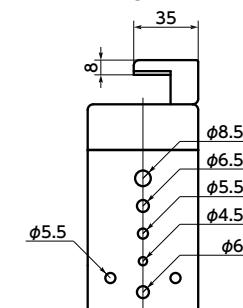
Example of part number: DKB-500 / DKB-500-PB-42.7

- For aluminum frame / For wall panel and sheet metal

DKB



Mounting hole details



Part Number	Mass (g)
DKB-500	800

- For aluminum frame end surface mounting

DKB-AA



Part Number	B	Mass (g)
DKB-500-AA-40	40	970

- Hex socket low head bolts (M8 × 16 mm) are supplied.

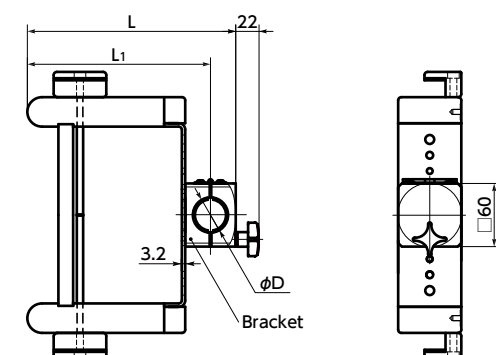
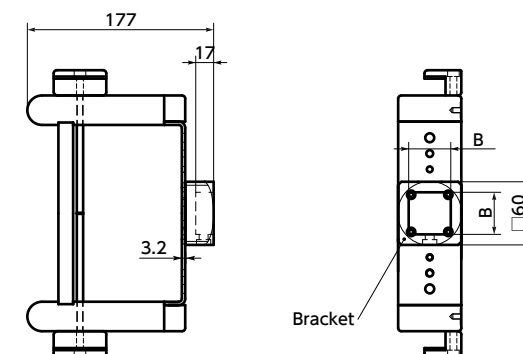
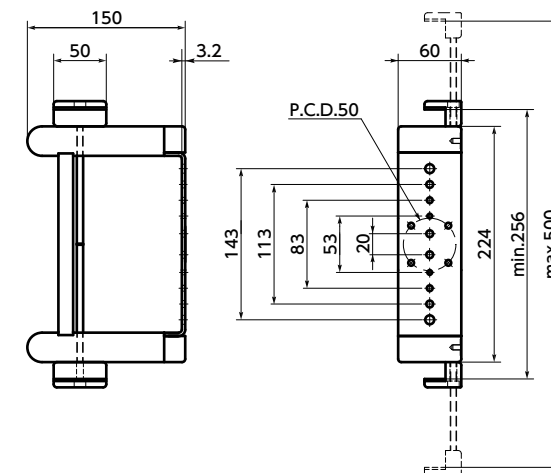
- For Round Pipe

DKB-PB

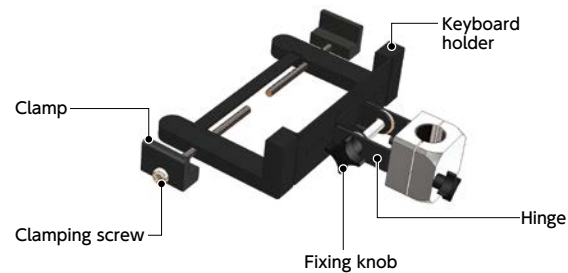


Part Number	D	L1	L	Mass (g)
DKB-500-PB-**	28	174	198	1130
	30			1130
	34			1120
	40	178	206	1110
	42.7			1105

- Fixing rubber sheet is attached.



Structure

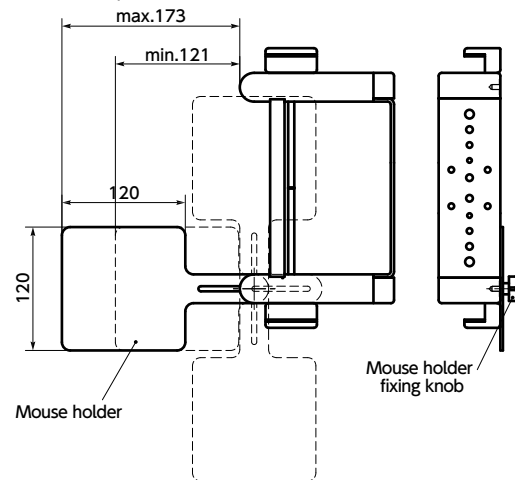


Material/Finish

	DKBR-AF	DKBR-AA / DKBR-PB
Keyboard Holder	ADC12 Electrostatic Coating	
Hinge	SPCC Electrostatic Coating	
Fixing Knob	Nylon 6	
Clamp	ADC12 Electrostatic Coating	
Clamping Screw	SWRCH Trivalent Chromate Treatment	
Mounting Plate	SPCC Electrostatic Coating	
Bracket	—	A6063 Anodized

Option

- A mouse holder **DKMP** is available as an option.
- This may be mounted on either side.



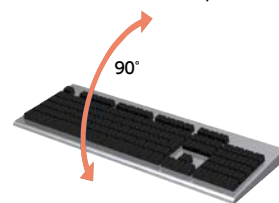
Part Number	Mass (g)
DKMP	288

Material / Finish

	DKMP
Mouse Holder	SPCC Electrostatic Coating
Mouse Holder Fixing Knob	Nylon 6



- Single axis type keyboard mounting system.
- By tightening the clamping screw, the keyboard is securely fixed and prevented from falling.
- B5 size laptops and 500 mm wide keyboards can be equipped.
- Three types of Mounting System for Display® are available for different types of mounting surfaces.
 - For aluminum frame / For wall panel and sheet metal — **DKBR-AF**
 - For aluminum frame end surface mounting — **DKBR-AA**
 - For Round Pipe — **DKBR-PB**
- Clamp screws of two sizes (Phillips cross recessed pan head machine screws) are supplied.
 - M6 × 40: Used when the keyboard width is 256 mm to 280 mm.
 - M6 × 140: Used when the keyboard width is 280 mm to 500 mm.
- It can be tilted by 90° in upward direction.



Application

Machine tool / Medical equipment / FPD production device / Semiconductor manufacturing device / Packing machine / Food machinery

Part number specification

DKBR-500-AA-40 Keyboard Mounting Systems

Product Code
DKMP Mouse Holder
 Example of part number: DKBR-500-AF-M8 / DKBR-500-PB-42.7

- For aluminum frame / For wall panel and sheet metal

DKBR-AF



Part Number	M*1 (d)	Mass (g)
DKBR-500-AF-**	M4 (5)	1410
	M5 (6)	
	M6 (7)	
	M8 (9)	

*1 : Mounting bolts are not supplied.

- For aluminum frame end surface mounting

DKBR-AA



Part Number	B	Mass (g)
DKBR-500-AA-40	40	1180

Hex socket low head bolts (M8 × 16 mm) are supplied.

- For Round Pipe

DKBR-PB



Part Number	D	L1	L	Mass (g)
DKBR-500-PB-**	28	240.6	264.6	1330
	30			1330
	34			1320
	40			1310
	42.7			1305

Fixing rubber sheet is attached.

