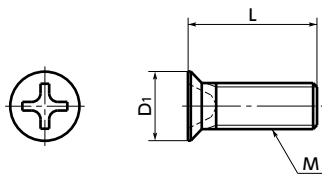




SPA-MF Plastic Cross Recessed Micro Flat Head Machine Screws - RENY

High strength
 Lightweight
 Miniature Size
 High Specific Strength



● Material/Finish



SPA-MF	
Main Body	RENY™*1 (50% Glass Fiber Reinforced Polyamide MXD6) (Ivory)
Heat Resistance Temperature*2	105°C

*1: RENY™ is a trademark or registered trademark of Mitsubishi Gas Chemical Company, Inc.

*2: This is the value for the resin material. The operating temperature of the product changes with performance conditions such as tightening torque.



- RENY™ miniature screws for precision instruments.
- RENY™ is a thermoplastic engineering plastic with excellent tensile and bending strength.
- It is highly fatigue-resistant and has excellent creep and heat insulation properties.
- While it is nearly as strong as metal, its weight is approximately 1/5 of iron.
- For the properties and precautions for use of plastic screws, see "Properties of Plastic Screws."

● Application

Heat insulation and dew condensation prevention of refrigerating and freezing facilities
Electrical and electronic equipment / Offshore instruments / Plating facilities

Unit : mm

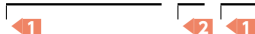
Part Number	M (Coarse)		L	D ₁	Cross-recessed Socket No.	Tensile Breaking Load*1 (N)	Torsional Torque*1 (N·m)	Mass (g)	Qty per Pack
	Nominal of Thread	Pitch							
SPA-M1.2-MF	M1.2	0.25	2.5 4	2.3	0	110	0.029	0.005 - 0.007	10
SPA-M1.2-MF(100)	M1.2	0.25	2.5 4	2.3	0	110	0.029	0.005 - 0.007	100
SPA-M1.4-MF	M1.4	0.3	2.5 4	2.5	0	150	0.047	0.006 - 0.008	10
SPA-M1.4-MF(100)	M1.4	0.3	2.5 4	2.5	0	150	0.047	0.006 - 0.008	100
SPA-M1.6-MF	M1.6	0.35	2.5 4	2.8	0	156	0.052	0.008 - 0.011	10
SPA-M1.6-MF(100)	M1.6	0.35	2.5 4	2.8	0	156	0.052	0.008 - 0.011	100

*1: Values in chart are for reference only. They are not guaranteed values. The recommended tightening torque is 50% of the torsional torque.

● When purchasing less volume than one full bag, a separate handling fee is charged. For details, see the Sold Separately Service.

● Part Number Specification

SPA-M1.6-4-MF



Individual Sales	Cleanroom Wash & Packaging	Screw Length Adjustment	Vibration Resistant	Modification process for captive use
Available / Add'l charge	Available / Add'l charge	Not Available	Not Available	Not Available