



# SFSS-ALK Flanged Socket Head Cap Screws with Nylon Patch



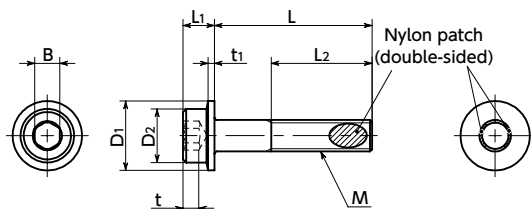
Vibration resistant treatment



Easy operation



SUS Stainless steel



## Material/Finish



	SFSS-ALK
Main Body	SUSXM7 (Equivalent to SUS304)
Nylon Patch	Nylon 11
Strength Class	A2 - 70

- Because the bearing surface is larger due to the head part flange, the pressure on the fastened material is dispersed compared to normal hex socket head cap screws, making bearing surfaces less likely to sink. Also, the bearing surface can be ensured even with large drilled hole diameters.
- Washer mounting work is not required, reducing the parts needed.
- Washerless design makes it ideal for automated screw fastening by robots.
- The friction of the nylon adhered to the thread suppresses the return rotation of the thread.
- Even if the tightening force is lost, the return rotation is suppressed, preventing the screws from falling off.
- The heat resistant temperature of the nylon patch is 120°C.

## Application

Screw return and fallout prevented

Equipment and device structures / General industrial machines

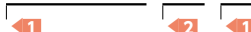
Unit : mm

Part Number <span style="color: red;">1</span>	M (Coarse)		L <span style="color: red;">2</span>								D1	D2	L1	L2*1	B	t	t1	Mass (g)	Qty per Pack
	Nominal of Thread	Pitch	6	8	10	12	16	20	25	30									
<b>SFSS-M4-ALK</b>	M4	0.7									9	7	4	Full Thread	3	2	0.8	1.5 - 2.6	20
<b>SFSS-M5-ALK</b>	M5	0.8									11	8.5	5	16 (L=25)	4	2.5	1	2.9 - 5.2	20
<b>SFSS-M6-ALK</b>	M6	1									12.5	10	6	Full Thread	5	3	1.6	4.9 - 7.5	20
<b>SFSS-M8-ALK</b>	M8	1.25									17	13	8	Full Thread	6	4	1.6	11 - 17	10

\* 1 : If the "L" value is not in parentheses, the screw is full thread.

- When purchasing less volume than one full bag, a separate handling fee is charged. For details, see the Sold Separately Service.

## Part Number Specification

**SFSS-M5-12-ALK**


<b>1</b> Individual Sales	Cleanroom Wash & Packaging	Screw Length Adjustment	Vibration Resistant	Modification process for captive use
Available / Add'l charge	Available / Add'l charge	Not Available	Not Available	Not Available