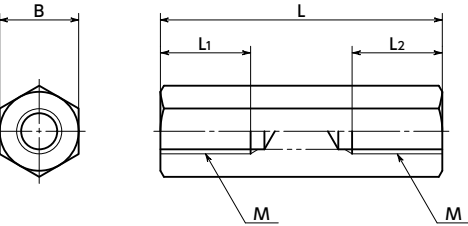


SPE-HB Plastic Hexagonal Standoffs - PEEK

Heat-resistance Chemical-proof Electrical Insulation



Material/Finish



	SPE-HB
Main Body	PEEK (Polyether Ether Ketone) (Light Brown)
Heat Resistance Temperature*1	260°C



*1 : This is the value for the resin material. The operating temperature of the product changes with performance conditions such as tightening torque.

- PEEK hexagon posts.
- PEEK is a thermoplastic super engineering plastic superior in physical and chemical properties.
- Excellent chemical resistance. It remains almost unaffected by chemicals other than concentrated sulfuric acid, concentrated nitric acid, and concentrated hydrofluoric acid.
- With excellent heat resistance and water resistance, it retains strength at high temperatures.
- It features outstanding resistance to wear, shock, and fatigue.
- It also has high flame retardance which clears the UL 94 V-0 standard.
- For the properties and precautions for use of plastic screws, see "Properties of Plastic Screws."

Application

FPD production equipment / Semiconductor manufacturing equipment / Printed circuit board etching devices / Metallic surface treatment equipment and facilities / Chemical plants / Transformers / Electrical and electronic equipment / Hot water pumps / Chemical pumps



Part Number 	M (Coarse)		L 														B	L ₁ *1	L ₂ *1	Mass (g)	Qty per Pack	
	Nominal of Thread	Pitch																				
SPE-M3-HB	M3	0.5	4	5	6	8	10	12	15	18	20	25	30				6	6(L≥15)	6(L≥15)	0.14 - 1.0	5	
SPE-M3-HB(100)	M3	0.5	4	5	6	8	10	12	15	18	20	25	30				6	6(L≥15)	6(L≥15)	0.14 - 1.0	100	
SPE-M4-HB	M4	0.7		5	6	8	10	12	15	18	20	25	30	35			7	8(L≥18)	8(L≥18)	0.22 - 1.5	5	
SPE-M4-HB(100)	M4	0.7		5	6	8	10	12	15	18	20	25	30	35			7	8(L≥18)	8(L≥18)	0.22 - 1.5	100	
SPE-M5-HB	M5	0.8			6	8	10	12	15	18	20	25	30	35	40		8	10(L≥25)	10(L≥25)	0.32 - 2.2	5	
SPE-M5-HB(100)	M5	0.8			6	8	10	12	15	18	20	25	30	35	40		8	10(L≥25)	10(L≥25)	0.32 - 2.2	100	
SPE-M6-HB	M6	1								15	18	20	25	30	35	40	50	10	12(L≥25)	12(L≥25)	1.2 - 4.0	5
SPE-M6-HB(100)	M6	1								15	18	20					10	12(L≥25)	12(L≥25)	1.2 - 1.6	100	
SPE-M6-HB(50)	M6	1											25	30	35	40	50	10	12(L≥25)	12(L≥25)	2.0 - 4.0	50
SPE-M8-HB	M8	1.25										20	25	30	35	40	50	13	16(L≥35)	16(L≥35)	2.6 - 6.5	5
SPE-M8-HB(50)	M8	1.25										20	25	30	35	40	50	13	16(L≥35)	16(L≥35)	2.6 - 6.5	50

*1 : Female screw through hole when the "L" value is not in parentheses.

- When purchasing less volume than one full bag, a separate handling fee is charged. For details, see the Sold Separately Service.

Individual Sales	Cleanroom Wash & Packaging	Screw Length Adjustment	Vibration Resistant	Modification process for captive use
Available / Add'l charge	Available / Add'l charge	Not Available	Not Available	Not Available

Part Number Specification

SPE-M3 - 4 - HB

1 2 1