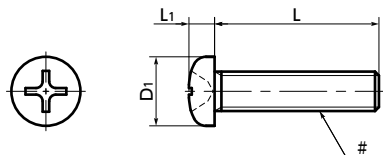


# SPEG-P(INCH) Plastic Inch Cross Recessed Pan Head Machine Screws - PEEK GF30

Heat-resistance Chemical-proof Electrical Insulation High Specific Strength

e-nedzi.com



## Material/Finish



| SPEG-P(INCH)                  |                                                                            |
|-------------------------------|----------------------------------------------------------------------------|
| Main Body                     | PEEK GF30 (PEEK Containing Glass Fiber) (Light Brown)<br>(Glass Fiber 30%) |
| Heat Resistance Temperature*1 | 260°C                                                                      |

\*1 : This is the value for the resin material. The operating temperature of the product changes with performance conditions such as tightening torque.

## Precautions for Use



Because a cumulative pitch difference is created when PEEK screws are manufactured, use these screws with nuts. If a nut is not used, use a 20 mm (approx. 0.79") or less fit with female thread.

- Cross-recessed pan head machine screws made of PEEK containing 30% glass fiber. The tensile strength is approximately 1.7 times that of ordinary PEEK.
- Inch screw type.
- PEEK is a thermoplastic super engineering plastic superior in physical and chemical properties.
- Excellent chemical resistance. It remains almost unaffected by chemicals other than concentrated sulfuric acid, concentrated nitric acid, and concentrated hydrofluoric acid.
- With excellent heat resistance and water resistance, it retains strength at high temperatures.
- It features outstanding resistance to wear, shock, and fatigue.
- It also has high flame retardance which clears the UL 94 V-0 standard.
- For the properties and precautions for use of plastic screws, see "Properties of Plastic Screws."

## Application

FPD production equipment / Semiconductor manufacturing equipment / Printed circuit board etching devices / Metallic surface treatment equipment and facilities / Chemical plants / Transformers / Electrical and electronic equipment / Hot water pumps / Chemical pumps



|                                                                                                 |                    |                                                                                       |       |        |       |       |       |       |       |   |                |                |                           |                                         | Unit : inch                          |             |              |
|-------------------------------------------------------------------------------------------------|--------------------|---------------------------------------------------------------------------------------|-------|--------|-------|-------|-------|-------|-------|---|----------------|----------------|---------------------------|-----------------------------------------|--------------------------------------|-------------|--------------|
| Part Number  | #Nominal of Thread | L  |       |        |       |       |       |       |       |   | D <sub>1</sub> | L <sub>1</sub> | Cross-recessed Socket No. | Tensile Breaking Load* <sup>1</sup> (N) | Torsional Torque* <sup>1</sup> (N・m) | Mass (g)    | Qty per Pack |
| SPEG-#2-56-P                                                                                    | No.2-56UNC         | 3 / 16                                                                                | 1 / 4 | 5 / 16 | 3 / 8 |       |       |       |       |   | 0.167          | 0.058          | 1                         | 276                                     | 0.11                                 | 0.01 - 0.05 | 10           |
| SPEG-#2-56-P(100)                                                                               | No.2-56UNC         | 3 / 16                                                                                | 1 / 4 | 5 / 16 | 3 / 8 |       |       |       |       |   | 0.167          | 0.058          | 1                         | 276                                     | 0.11                                 | 0.01 - 0.05 | 100          |
| SPEG-#4-40-P                                                                                    | No.4-40UNC         |                                                                                       | 1 / 4 | 5 / 16 | 3 / 8 | 1 / 2 | 5 / 8 | 3 / 4 | 7 / 8 | 1 | 0.219          | 0.08           | 1                         | 434                                     | 0.23                                 | 0.03 - 0.17 | 10           |
| SPEG-#4-40-P(100)                                                                               | No.4-40UNC         |                                                                                       | 1 / 4 | 5 / 16 | 3 / 8 | 1 / 2 | 5 / 8 | 3 / 4 | 7 / 8 | 1 | 0.219          | 0.08           | 1                         | 434                                     | 0.23                                 | 0.03 - 0.17 | 100          |
| SPEG-#6-32-P                                                                                    | No.6-32UNC         |                                                                                       | 1 / 4 | 5 / 16 | 3 / 8 | 1 / 2 | 5 / 8 | 3 / 4 | 7 / 8 | 1 | 0.27           | 0.097          | 2                         | 644                                     | 0.44                                 | 0.19 - 0.33 | 10           |
| SPEG-#6-32-P(100)                                                                               | No.6-32UNC         |                                                                                       | 1 / 4 | 5 / 16 | 3 / 8 | 1 / 2 | 5 / 8 | 3 / 4 | 7 / 8 | 1 | 0.27           | 0.097          | 2                         | 644                                     | 0.44                                 | 0.19 - 0.33 | 100          |
| SPEG-#8-32-P                                                                                    | No.8-32UNC         |                                                                                       | 1 / 4 | 5 / 16 | 3 / 8 | 1 / 2 | 5 / 8 | 3 / 4 | 7 / 8 | 1 | 0.322          | 0.115          | 2                         | 1017                                    | 0.79                                 | 0.21 - 0.35 | 10           |
| SPEG-#8-32-P(100)                                                                               | No.8-32UNC         |                                                                                       | 1 / 4 | 5 / 16 | 3 / 8 | 1 / 2 | 5 / 8 | 3 / 4 | 7 / 8 | 1 | 0.322          | 0.115          | 2                         | 1017                                    | 0.79                                 | 0.21 - 0.35 | 100          |
| SPEG-#10-32-P                                                                                   | No.10-32UNF        |                                                                                       |       |        | 3 / 8 | 1 / 2 | 5 / 8 | 3 / 4 | 7 / 8 | 1 | 0.373          | 0.133          | 2                         | 1424                                    | 1.17                                 | 0.28 - 0.38 | 10           |
| SPEG-#10-32-P(100)                                                                              | No.10-32UNF        |                                                                                       |       |        | 3 / 8 | 1 / 2 | 5 / 8 | 3 / 4 | 7 / 8 | 1 | 0.373          | 0.133          | 2                         | 1424                                    | 1.17                                 | 0.28 - 0.38 | 100          |
| SPEG-1 / 4-20-P                                                                                 | 1/4-20UNC          |                                                                                       |       |        | 3 / 8 | 1 / 2 | 5 / 8 | 3 / 4 | 7 / 8 | 1 | 0.492          | 0.175          | 3                         | 2160                                    | 2.5                                  | 0.3 - 0.4   | 10           |
| SPEG-1 / 4-20-P(100)                                                                            | 1/4-20UNC          |                                                                                       |       |        | 3 / 8 | 1 / 2 | 5 / 8 | 3 / 4 | 7 / 8 | 1 | 0.492          | 0.175          | 3                         | 2160                                    | 2.5                                  | 0.3 - 0.4   | 100          |

\*1 : Values in chart are for reference only. They are not guaranteed values. The recommended tightening torque is 50% of the torsional torque.

• When purchasing less volume than one full bag, a separate handling fee is charged. For details, see the Sold Separately Service.

## Related Products

PEEK hex nuts (inch screw)  
SPE-N(INCH) are available.



## Part Number Specification

SPEG-#4-40-1/4-P

1 2 1

|                          |                            |                          |                     |                                      |
|--------------------------|----------------------------|--------------------------|---------------------|--------------------------------------|
| Individual Sales         | Cleanroom Wash & Packaging | Screw Length Adjustment  | Vibration Resistant | Modification process for captive use |
| Available / Add'l charge | Available / Add'l charge   | Available / Add'l charge | Not Available       | Not Available                        |