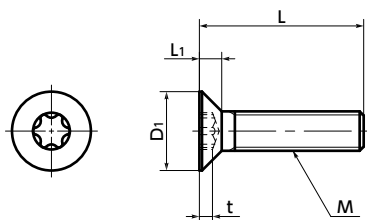




SNFXS Hexalobular Socket Flat Head Machine Screws

Protrusion SUS Stainless steel



Material/Finish



| | SNFXS |
|----------------|----------------------------------|
| Main Body | SUSXM7 (Equivalent to SUS304) |
| Strength Class | A2-50 |

Application

Prevention of damage to screw heads and reliable tightening



- Hexalobular socket shapes*1 are designed to withstand high tightening torque compared to cross-recesses.
- Hexalobular recess is unlikely to be damaged due to tightening, allowing safe and secure tightening to be performed.
- Conforms to ISO 14581.

*1: The hexalobular shape is prescribed by JIS B 1015: 2008(ISO 10664: 2005)"Hexalobular internal driving feature for bolts and screws".

Unit: mm

| Part Number ◀1 | M (Coarse) | | L ◀2 | L1 | t | Hexalobular Socket No. | Mass (g) | Qty per pack |
|-------------------|-------------------|-------|---------------------|------|------|---------------------------|----------|-----------------|
| | Nominal of Thread | Pitch | | | | | | |
| SNFXS-M2 | M2 | 0.4 | 4 5 6 8 10 12 | 3.8 | 1.2 | 0.64 | 6 | 0.14 - 0.29 |
| SNFXS-M2.5 | M2.5 | 0.45 | 4 5 6 8 10 12 16 | 4.7 | 1.5 | 0.79 | 8 | 0.27 - 0.65 |
| SNFXS-M3 | M3 | 0.5 | 5 6 8 10 12 16 20 | 5.5 | 1.65 | 0.83 | 10 | 0.49 - 1.1 |
| SNFXS-M4 | M4 | 0.7 | 6 8 10 12 16 20 25 | 8.4 | 2.7 | 1.53 | 20 | 1 - 2.5 |
| SNFXS-M5 | M5 | 0.8 | 8 10 12 16 20 25 30 | 9.3 | 2.7 | 1.51 | 25 | 2.2 - 4.8 |
| SNFXS-M6 | M6 | 1 | 10 12 16 20 25 30 | 11.3 | 3.3 | 1.78 | 30 | 3.9 - 7.4 |

• When purchasing less volume than one full bag, a separate handling fee is charged. For details, see the Sold Separately Service.

Related Products

SKX Hexalobular Wrench



SKX-N Hexalobular Wrench for
Extremely Limited Access
Spaces



SKXB Hexalobular Short Bit



SRD Magnet Screwdriver



Part number specification

SNFXS-M5-20

◀1

◀2

| | | | | |
|--------------------------|----------------------------|--------------------------|--------------------------|--------------------------------------|
| Individual Sales | Cleanroom Wash & Packaging | Screw Length Adjustment | Vibration Resistant | Modification process for captive use |
| Available / Add'l charge | Available / Add'l charge | Available / Add'l charge | Available / Add'l charge | Not Available |