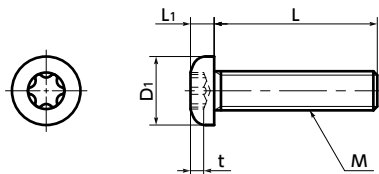




# SNPXS Hexalobular Socket Pan Head Machine Screws

Protrusion SUS Stainless steel



	<b>SNPXS</b>	RoHS
Material	SUSXM7 (Equivalent to SUS304)	
Strength Class	A2-50	

## • Application

Prevention of damage to screw heads and reliable tightening

- Hexalobular socket shapes\*1 are designed to withstand high tightening torque compared to cross-recesses.
- Hexalobular recess is unlikely to be damaged due to tightening, allowing safe and secure tightening to be performed.

- Conforms to ISO 14583.

\*1 : The hexalobular shape is prescribed by JIS B 1015: 2008(ISO 10664: 2005)"Hexalobular internal driving feature for bolts and screws".

Unit : mm

Part Number 1	M (Coarse)		L 2										D1	L1	t	Hexalobular Socket No.	Mass (g)	Qty per pack
	Nominal of Thread	Pitch	4	5	6	8	10	12	16	20	25	30						
<b>SNPXS-M2</b>	M2	0.4	4	5	6	8	10	12	16	20	25	30	4	1.6	0.77	6	0.14 - 0.29	20
<b>SNPXS-M2.5</b>	M2.5	0.45	4	5	6	8	10	12	16	20	25	30	5	2.1	1.04	8	0.27 - 0.65	20
<b>SNPXS-M3</b>	M3	0.5		5	6	8	10	12	16	20	25	30	5.6	2.4	1.27	10	0.49 - 1.1	20
<b>SNPXS-M4</b>	M4	0.7			6	8	10	12	16	20	25	30	8	3.1	1.66	20	1 - 2.5	20
<b>SNPXS-M5</b>	M5	0.8				8	10	12	16	20	25	30	9.5	3.7	1.91	25	2.2 - 4.8	20
<b>SNPXS-M6</b>	M6	1					10	12	16	20	25	30	12	4.6	2.42	30	3.9 - 7.4	20

- When purchasing less volume than one full bag, a separate handling fee is charged. For details, see the Sold Separately Service.

## • Related Products

**SKX** Hexalobular Wrench



**SKX-N** Hexalobular Wrench for  
Extremely Limited Access  
Spaces



**SKXB** Hexalobular Short Bit



**SRD** Magnet Screwdriver



- Part number specification

**SNPXS-M5-20**

1 2

1 Individual Sales	Cleanroom Wash & Packaging	Screw Length Adjustment	Vibration Resistant	Modification process for captive use
Available / Add'l charge	Available / Add'l charge	Available / Add'l charge	Available / Add'l charge	Available / Add'l charge