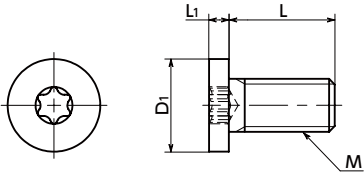


SPE-SH Plastic Ultra Low Profile Hexalobular Socket Head Screws - PEEK

Protrusion Heat-resistance Chemical-proof Electrical Insulation



Material/Finish



	SPE-SH
Main Body	PEEK (Polyether Ether Ketone) (Light Brown)
Heat Resistance Temperature*1	260°C

*1 : This is the value for the resin material. The operating temperature of the product changes with performance conditions such as tightening torque.

Precautions for Use



Because a cumulative pitch difference is created when PEEK screws are manufactured, use these screws with nuts. If a nut is not used, use a 20 mm or less fit with female thread.

- PEEK special low profile cap screw. All head heights are 1.5mm or less.
- PEEK is a thermoplastic super engineering plastic superior in physical and chemical properties.
- Excellent chemical resistance. It remains almost unaffected by chemicals other than concentrated sulfuric acid, concentrated nitric acid, and concentrated hydrofluoric acid.
- With excellent heat resistance and water resistance, it retains strength at high temperatures.
- It features outstanding resistance to wear, shock, and fatigue.
- It also has high flame retardance which clears the UL 94 V-0 standard.
- The recess has a hexalobular*1 shape that can withstand high tightening torque.
- Install and remove with **SKX** Dedicated Wrench or **SKXB** Dedicated Bit and **SRD** Dedicated Magnetic Screwdriver together.
- Use the **SKX-N** hexalobular wrench for extremely limited access spaces for mounting and removing in tight spaces.
- For the properties and precautions of plastic screws, please refer to "Properties of Plastic Screws".

*1 : The hexalobular shape is prescribed by JIS B 1015: 2008(ISO 10664: 2005)"Hexalobular internal driving feature for bolts and screws".

Application

FPD production equipment / Semiconductor devices / Printed circuit board etching devices / Metallic surface treatment equipment and facilities / Chemical plants / Transformers / Electrical and electronic equipment / Hot water pumps / Chemical pumps

																			Unit : mm
Part Number 	M (Coarse)		L 								D1	L1	Applicable Wrench	Hexalobular Socket No.	Tensile Breaking Load*1 (N)	Torsional Torque*1 (N・m)	Mass (g)	Qty per Pack	
	Nominal of Thread	Pitch																	
SPE-M3-SH	M3	0.5	6	8	10	12	16	20				6	1.3	SKX-8	8	376	0.2	0.077 - 0.18	20
SPE-M3-SH(100)	M3	0.5	6	8	10	12	16	20				6	1.3	SKX-8	8	376	0.2	0.077 - 0.18	100
SPE-M4-SH	M4	0.7	6	8	10	12	16	20	25			8	1.5	SKX-10	10	713	0.45	0.15 - 0.37	20
SPE-M4-SH(100)	M4	0.7	6	8	10	12	16	20	25			8	1.5	SKX-10	10	713	0.45	0.15 - 0.37	100
SPE-M5-SH	M5	0.8	6	8	10	12	16	20	25	30		9	1.5	SKX-15	15	1200	0.81	0.22 - 0.69	20
SPE-M5-SH(100)	M5	0.8	6	8	10	12	16	20	25	30		9	1.5	SKX-15	15	1200	0.81	0.22 - 0.69	100
SPE-M6-SH	M6	1			10	12	16	20	25	30	40	10	1.5	SKX-20	20	1551	1.39	0.39 - 1.22	10
SPE-M6-SH(100)	M6	1			10	12	16	20	25	30	40	10	1.5	SKX-20	20	1551	1.39	0.39 - 1.22	100

*1 : Values in chart are for reference only. They are not guaranteed values. The recommended tightening torque is 50% of the torsional torque.

• When purchasing less volume than one full bag, a separate handling fee is charged. For details, see the Sold Separately Service.

Individual Sales	Cleanroom Wash & Packaging	Screw Length Adjustment	Vibration Resistant	Modification process for captive use
Available / Add'l charge	Available / Add'l charge	Available / Add'l charge	Not Available	Not Available



Related Products

PEEK hex nuts and washers **SPE-N** **SPE-W** are available.



SKX Hexalobular Wrench



SKX-N Hexalobular Wrench for Extremely Limited Access Spaces



SKXB Hexalobular Short Bit



SRD Magnet Screwdriver



Part Number Specification

SPE-M5-30-SH

1 2 1