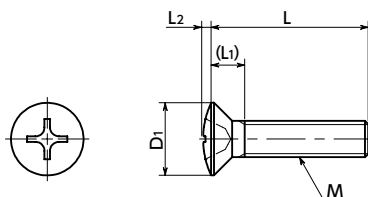




SPC-R Plastic Cross Recessed Oval Head Machine Screws - PC

Lightweight Electrical Insulation



- PC (polycarbonate) Phillips cross recessed round flat head machine screws.
- PC (polycarbonate) has the highest shock resistance of engineering plastics.
- Allowable operating temperature*1 (min./max.): -40°C/115°C
- PC has low water absorbency and excellent weather resistance.
- For the properties and precautions for use of plastic screws, see "Properties of Plastic Screws."

• Application

Electrical and electronic equipment

• Material/Finish



	SPC-R
Main Body	PC (Polycarbonate) (Transparent)
Heat Resistance Temperature*1	115°C

*1: This is the value for the resin material. The operating temperature of the product changes with performance conditions such as tightening torque.

Unit : mm

Part Number	M (Coarse)		L																	D1	L1	L2	Cross-recessed Socket No.	Tensile Breaking Load*1 (N)	Torsional Torque*1 (N·m)	Mass (g)	Qty per Pack
	Nominal of Thread	Pitch																									
SPC-M3-R	M3	0.5	5	6	8	10	12	15	20		6	1.75	0.7	2						6	1.75	0.7	2	266	0.18	0.15 - 0.24	100
SPC-M3-R(1000)	M3	0.5	5	6	8	10	12	15	20		6	1.75	0.7	2						6	1.75	0.7	2	266	0.18	0.15 - 0.24	1000
SPC-M4-R	M4	0.7				10	12	15	20	25	8	2.3	0.9	2						8	2.3	0.9	2	481	0.39	0.21 - 0.39	100
SPC-M4-R(1000)	M4	0.7				10	12	15	20		8	2.3	0.9	2						8	2.3	0.9	2	481	0.39	0.21 - 0.33	1000
SPC-M4-R(500)	M4	0.7								25	8	2.3	0.9	2						8	2.3	0.9	2	481	0.39	0.39	500

*1: Values in chart are for reference only. They are not guaranteed values. The recommended tightening torque is 50% of the torsional torque.

- When purchasing less volume than one full bag, a separate handling fee is charged. For details, see the Sold Separately Service.

• Part Number Specification

SPC-M4-15-R

Individual Sales	Cleanroom Wash & Packaging	Screw Length Adjustment	Vibration Resistant	Modification process for captive use
Available / Add'l charge	Available / Add'l charge	Available / Add'l charge	Not Available	Not Available