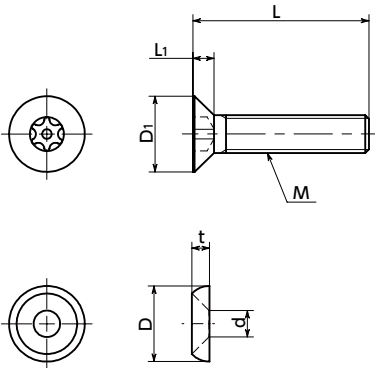


SRFXS-SET Flat Head Bolts with Hexalobular Socket (with Pin) Rosette Washer Set

SUS Stainless steel Tamper Resistance



Material/Finish

	SRFXS-SET
Flat Head Bolt with Hexalobular Socket (with Pin)	Equivalent to SUS304
Rosette Washer	SUS303



- Set of Flat Head Bolt with Hexalobular Socket\*1 **SRFXS** (→ P.xxxx) and Rosette Washer **SWAS-RW** (→ P.xxxx).
  - SRFXS** can be used without countersinking.
  - SRFXS** cannot be mounted or removed by normal tools. Since the combined use of **SWAS-RW** will disable pinching and rotating **SRFXS** directly, the anti-theft performance is improved.
  - Install and remove with **SRX** Dedicated Wrench or **SRXB** Dedicated Bit and **SRD** Dedicated Magnetic Screwdriver together.
- \*1: The hexalobular shape is prescribed by JIS B 1015: 2008(ISO 10664: 2005)"Hexalobular internal driving feature for bolts and screws".

Application

Machinery / Tools / Equipment / Devices disassembly prevention / Tampering prevention / Theft prevention for outdoor facilities / Security measures / Safety measures / Decoration / Prevention from getting caught

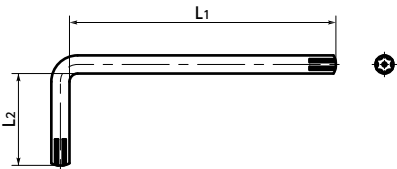
Unit : mm																					
Part Number	M (Coarse)		L	D <sub>1</sub>	L <sub>1</sub>	D	d	t	Applicable Wrench Type	Applicable Bit Type		Hexalobular Socket No.	Mass (g)	Qty per Pack							
	Nominal of Thread	Pitch								Bit	Driver										
SRFXS-M3-SET	M3	0.5	6	8	10	12				6	1.75	10	3.5	2	SRX-10	SRXB-10	SRD-6.35	10	1.3 - 1.5	10	
SRFXS-M4-SET	M4	0.7		8	10	12	16	20		8	2.3	12	4.5	2.5	SRX-20	SRXB-20	SRD-6.35	20	2.2 - 3.1	10	
SRFXS-M5-SET	M5	0.8			10	12	16	20	25	10	2.8	14	5.5	3	SRX-25	SRXB-25	SRD-6.35	25	4 - 5.9	10	
SRFXS-M6-SET	M6	1			10	12	16	20	25	30	12	3.4	16	6.5	3.5	SRX-30	SRXB-30	SRD-6.35	30	6.4 - 10	10

When purchasing less volume than one full bag, a separate handling fee is charged. For details, see the Sold Separately Service.

SRX Dedicated Wrench

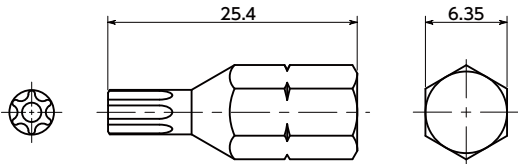
Unit : mm

Part Number	L1	L2	Mass (g)
SRX-10	60	20	3.7
SRX-20	67	23	8.2
SRX-25	70	25	11
SRX-30	81	28	20



SRXB Bit Part No.

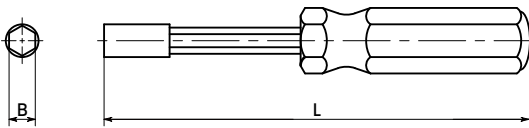
Part Number	Mass (g)
SRXB-10	4.36
SRXB-20	4.57
SRXB-25	4.79
SRXB-30	5.50



SRD Dedicated magnet screwdriver

Unit : mm

Part Number	L	B	Mass (g)
SRD-6.35	210	6.35	98

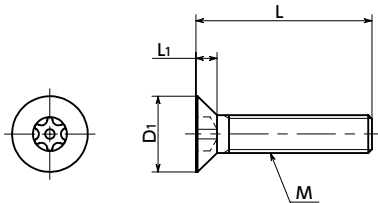


Part number specification

SRFXS-M5-16-SET



Individual Sales → P.xxxx	Cleanroom Wash & Packaging → P.xxxx	Screw Length Adjustment → P.xxxx	Vibration Resistant → P.xxxx	Modification process for captive use → P.xxxx
Available / Add'l charge	Available / Add'l charge	Available / Add'l charge	Available / Add'l charge	Not Available



Material/Finish

	SRFXS
Main Body	Equivalent to SUS304
Strength Class	Equivalent to A2-50



- Flat head bolt with a pin at the center of the hexalobular socket \*1.
- This prevents mounting and removing with regular tools.
- Install and remove with **SRX** Dedicated Wrench or **SRXB** Dedicated Bit and **SRD** Dedicated Magnetic Screwdriver together.

\*1 : The hexalobular shape is prescribed by JIS B 1015: 2008(ISO 10664: 2005)"Hexalobular internal driving feature for bolts and screws".

Application

Equipment/devices disassembly/tampering prevention  
Theft prevention for outdoor facilities  
Security measures  
Safety measures

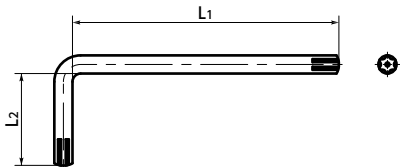
Part Number	M (Coarse)		L								D1	L1	Applicable Wrench Type	Applicable Bit Type		Hexalobular Socket No.	Mass (g)	Qty per Pack
	Nominal of Thread	Pitch	6	8	10	12	16	20	25	30				Bit	Driver			
SRFXS-M3	M3	0.5	6	8	10	12					6	1.75	SRX-10	SRXB-10	SRD-6.35	10	0.48 - 0.72	10
SRFXS-M4	M4	0.7		8	10	12	16	20			8	2.3	SRX-20	SRXB-20	SRD-6.35	20	1 - 1.9	10
SRFXS-M5	M5	0.8		8	10	12	16	20	25		10	2.8	SRX-25	SRXB-25	SRD-6.35	25	1.9 - 3.9	10
SRFXS-M6	M6	1			10	12	16	20	25	30	12	3.4	SRX-30	SRXB-30	SRD-6.35	30	3.3 - 7	10

- When purchasing less volume than one full bag, a separate handling fee is charged. For details, see the Sold Separately Service.

SRX Dedicated Wrench

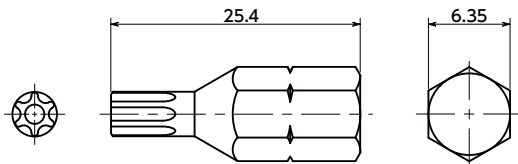
Unit : mm

Part Number	L1	L2	Mass (g)
SRX-10	60	20	3.7
SRX-20	67	23	8.2
SRX-25	70	25	11
SRX-30	81	28	20



SRXB Bit Part No.

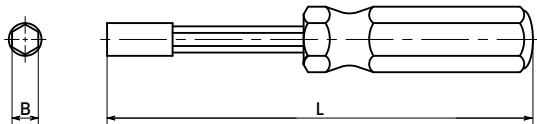
Part Number	Mass (g)
SRXB-10	4.36
SRXB-20	4.57
SRXB-25	4.79
SRXB-30	5.50



SRD Dedicated Magnet Screwdriver

Unit : mm

Part Number	L	B	Mass (g)
SRD-6.35	210	6.35	98



Related Products

Washer for Flat Head Screw  
**SWAS-RW** is available.

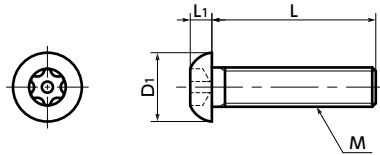


Part Number Specification

SRFXS-M5-16



Individual Sales	Cleanroom Wash & Packaging	Screw Length Adjustment	Vibration Resistant	Modification process for captive use
Available / Add'l charge	Available / Add'l charge	Available / Add'l charge	Available / Add'l charge	Not Available



● Material/Finish

	SRBS
Main Body	Equivalent to SUS304
Strength Class	Equivalent to A2-50



- Button head cap screws with a pin at the center of the hexalobular socket \*1.
- This prevents mounting and removing with regular tools.
- Install and remove with **SRX** Dedicated Wrench or **SRXB** Dedicated Bit and **SRD** Dedicated Magnetic Screwdriver together.

\*1: The hexalobular shape is prescribed by JIS B 1015: 2008(ISO 10664: 2005)"Hexalobular internal driving feature for bolts and screws".

● Application

Equipment/devices disassembly/tampering prevention  
Theft prevention for outdoor facilities  
Security measures  
Safety measures

Part Number	M (Coarse)		L												D1	L1	Applicable Wrench Type	Applicable Bit Type		Hexalobular Socket No.	Mass (g)	Qty per Pack
	Nominal of Thread	Pitch	6	8	10	12	15	16	20	25	30	35	40					Bit	Driver			
<b>SRBS-M3</b>	M3	0.5	6	8	10	12	15	16	20	25					5.7	1.65	SRX-10	SRXB-10	SRD-6.35	10	0.48 - 1.4	20
<b>SRBS-M4</b>	M4	0.7	6	8	10	12	15	16	20	25	30	35	40		7.6	2.2	SRX-20	SRXB-20	SRD-6.35	20	1.1 - 4.2	20*1
<b>SRBS-M5</b>	M5	0.8		8	10	12	15	16	20	25	30		40		9.5	2.75	SRX-25	SRXB-25	SRD-6.35	25	1.8 - 6.4	20
<b>SRBS-M6</b>	M6	1		8	10	12	15	16	20	25	30		40	50	10.5	3.3	SRX-30	SRXB-30	SRD-6.35	30	3 - 12	10
<b>SRBS-M8</b>	M8	1.25			10	12		16	20	25	30		40	50	14	4.4	SRX-40	SRXB-40	SRD-6.35	40	7.3 - 22	10

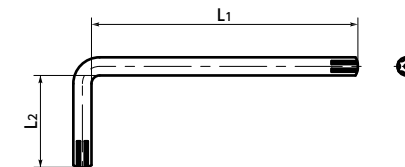
\*1: Quantity per pack for **SRBS-M4-35** and **SRBS-M4-40** is 1.

● When purchasing less volume than one full bag, a separate handling fee is charged. For details, see the Sold Separately Service.

● **SRX** Dedicated Wrench

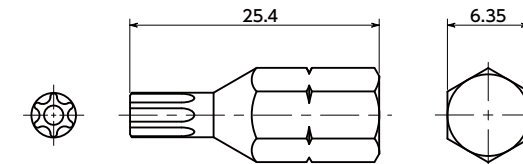
Unit : mm

Part Number	L1	L2	Mass (g)
<b>SRX-10</b>	60	20	3.7
<b>SRX-20</b>	67	23	8.2
<b>SRX-25</b>	70	25	11
<b>SRX-30</b>	81	28	20
<b>SRX-40</b>	88	31	32



● **SRXB** Bit Part No.

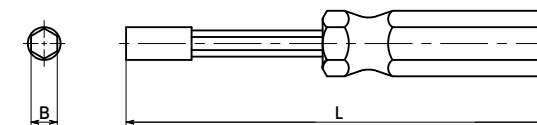
Part Number	Mass (g)
<b>SRXB-10</b>	4.36
<b>SRXB-20</b>	4.57
<b>SRXB-25</b>	4.79
<b>SRXB-30</b>	5.50
<b>SRXB-40</b>	6.00



● **SRD** Dedicated Magnet Screwdriver

Unit : mm

Part Number	L	B	Mass (g)
<b>SRD-6.35</b>	210	6.35	98



● Part Number Specification

**SRBS-M5-16**



1 Individual Sales	Cleanroom Wash & Packaging	Screw Length Adjustment	Vibration Resistant	Modification process for captive use
Available / Add'l charge	Available / Add'l charge	Available / Add'l charge	Available / Add'l charge	Available / Add'l charge